



# **Installation Instructions**

## Instructions to connect via FlexiHub

v1.0 (13.07.2020)

## Contents

<b>1</b>	<b>Copyright</b>	<b>3</b>
<b>2</b>	<b>Note preparatory works:</b>	<b>3</b>
<b>3</b>	<b>Preparatory works FlexiHub session</b>	<b>4</b>
<b>4</b>	<b>How remove the component protection</b>	<b>5</b>
<b>5</b>	<b>How read out the VCRN number</b>	<b>6</b>
<b>6</b>	<b>Important note usage FlexiHub</b>	<b>7</b>
<b>7</b>	<b>Usage FlexiHub (PC)</b>	<b>8</b>

## 1 Copyright

### Urheberrecht

- Our installation and operating instructions, installation plans, software and other documentation in text and image form are protected by copyright.

Any publication or distribution of this documentation is only allowed with the written permission of Kufatec GmbH & Co. KG.

## 2 Note preparatory works:

### Important note

- **IMPORTANT:** The listed steps must be executed in the intended order, otherwise the activation can't be executed due to wrong data. If that's the case, we are forced to charge 250 euro for a new activation.
- **Needed hardware:**
  - regular laptop
  - Coding interface **VAS 6154** or **VAS 5054**
  - USB cable to connect the coding interface to the laptop
  - Adjustment tools to calibrate the sensors (if necessary)

### 3 Preparatory works FlexiHub session

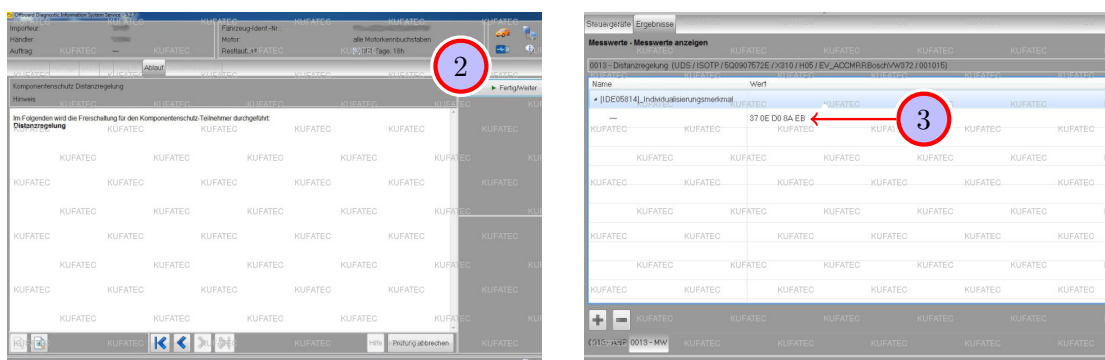


Figure 1: Preparatory works FlexiHub session

Table 1: Preparatory works FlexiHub session

No.	Work step	Note
!!	<b>Important note: The listed steps must be executed in the intended order, otherwise the activation can't be executed due to wrong data. If that's the case, we are forced to charge 250 euro for a new activation.</b>	
1	Execute the retrofitting (e.g. ACC) for the vehicle completely.	
2	After complete assembly of the hardware components (assembly new sensor) <b>diagnosis address 13 of component protection is active</b> . Therefore the sensor has to be taught. Check the error memory afterwards.	
!!	<b>Important: No error regarding the component protection must be displayed in the error memory.</b>	
3	Go from address 13 via the drop down menu to <b>measured values</b> and then to <b>individualization features</b> . We need a screenshot of that. <b>Important: The VCRN number has to be completely visible</b> . The image file then has to be send to us via reply to our last email.	
4	When the email has been send, a KUFATEC employee will reach out to you as soon as possible to arrange an appointment regarding the activation via FlexiHub. Please send us a telephone number where we can reach you as well.	

## 4 How remove the component protection

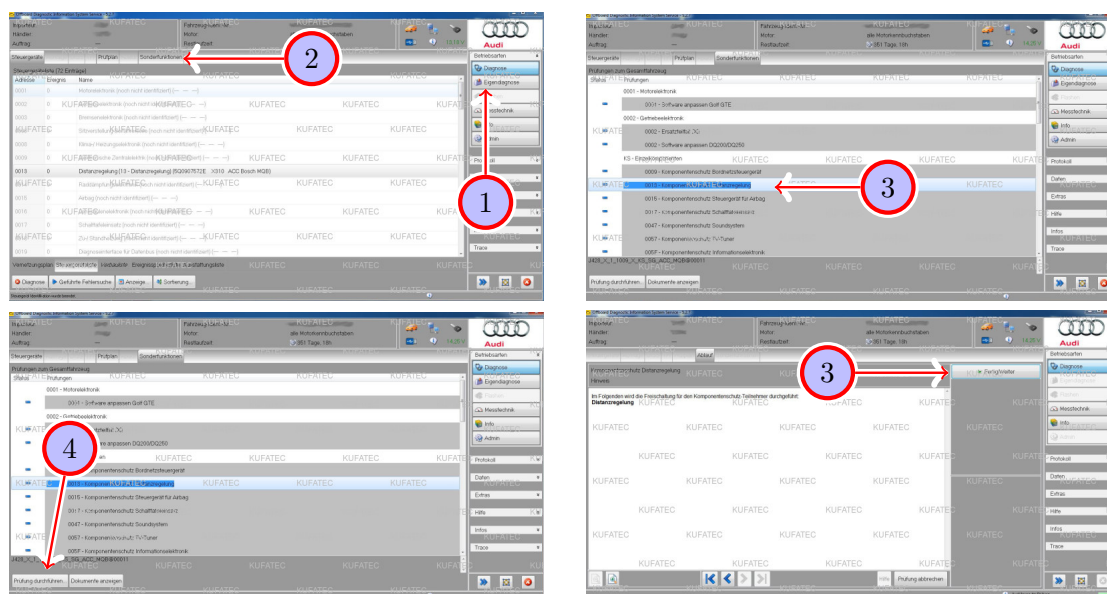


Figure 2: How remove the component protection

Table 2: How remove the component protection

No.	Work step	Note
!!	<b>Important note: Before the VCRN number. can be read out, the component protection has to be removed first.</b>	
!!	<b>Please follow the instructions in order to remove the component protection via the diagnosis program ODIS.</b>	
1	Execute a complete diagnosis scan (self diagnosis) for the vehicle.	
2	Go to <b>special functions</b> .	
3	Look for address <b>0013 component protection distance control</b> in the list. This point is located in the group <b>KS single components</b> .	
4	Mark the address <b>0013 component protection distance control</b> . Press <b>execute examination</b> .	
5	In order to remove the component protection click on <b>finished/continue</b> .	

## 5 How read out the VCRN number

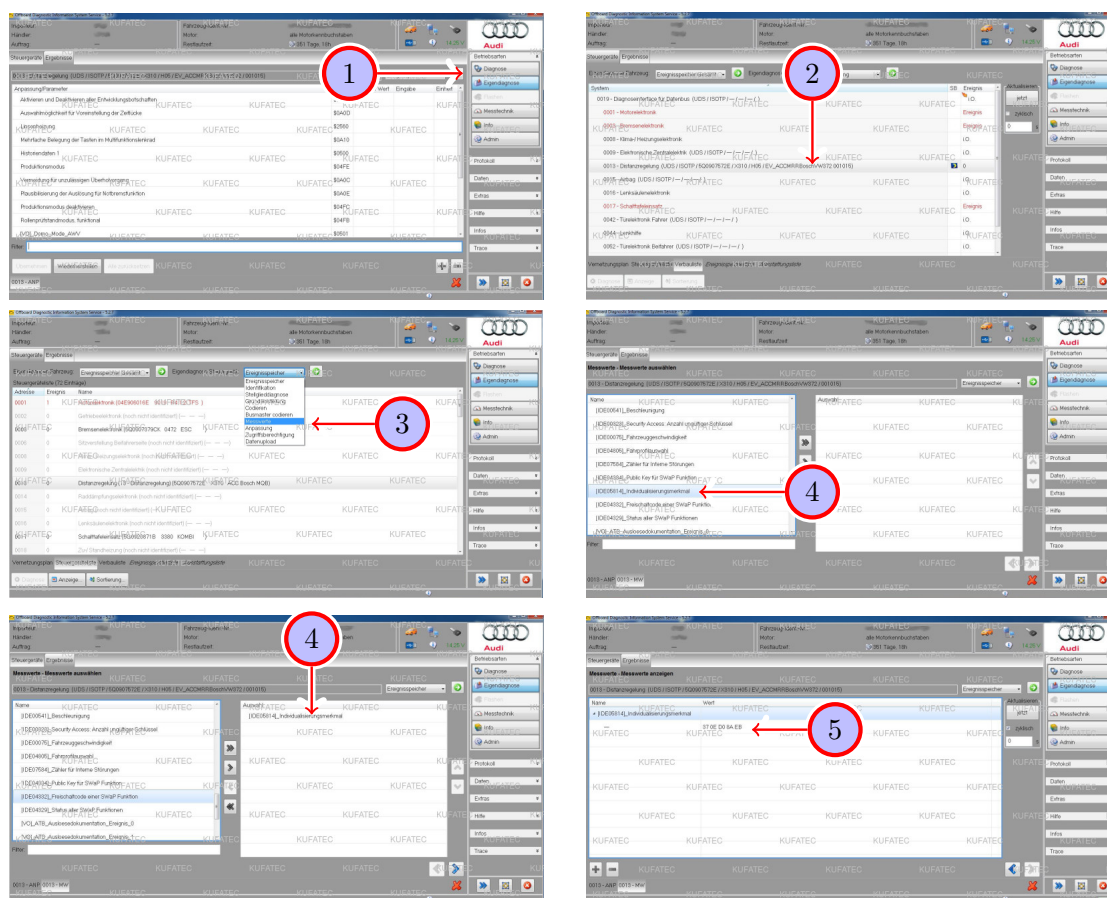


Figure 3: How read out the VCRN number

Table 3: How read out the VCRN number

No.	Work step	Note
!!	<b>Please follow these steps to show the VCRN number via the ODIS diagnose program.</b>	
1	Execute the complete diagnosis scan (self diagnosis) for the vehicle.	
2	Look for and mark <b>address 0013 distance control</b> in the overview.	
3	Go from <b>address 13</b> to <b>measured values</b> and then to <b>individualization features</b> .	
4	Look on the left side of the table for the point <b>IDE05814 individualization features</b> and insert it to the right side of the table.	
5	Now in the overview <b>measured values</b> / <b>show measured values</b> the point <b>IDE05814 individualization features</b> is shown. The code <b>VCRN</b> number under value has to be shown completely on the screenshot.	
!!	<b>Important note: Because the VCRN number changes after removing the component protection, it has to be made sure that the component protection is already removed when the screenshot is taken.</b>	

## 6 Important note usage FlexiHub

### Important note usage FlexiHub

- For the FlexiHub session a stable and open internet connection is needed, so access for us is possible without problems. Make sure together with your admin that no limitations are given. Alternatively a hotspot can be created with a mobile phone, if the connection is stable.

## 7 Usage FlexiHub (PC)

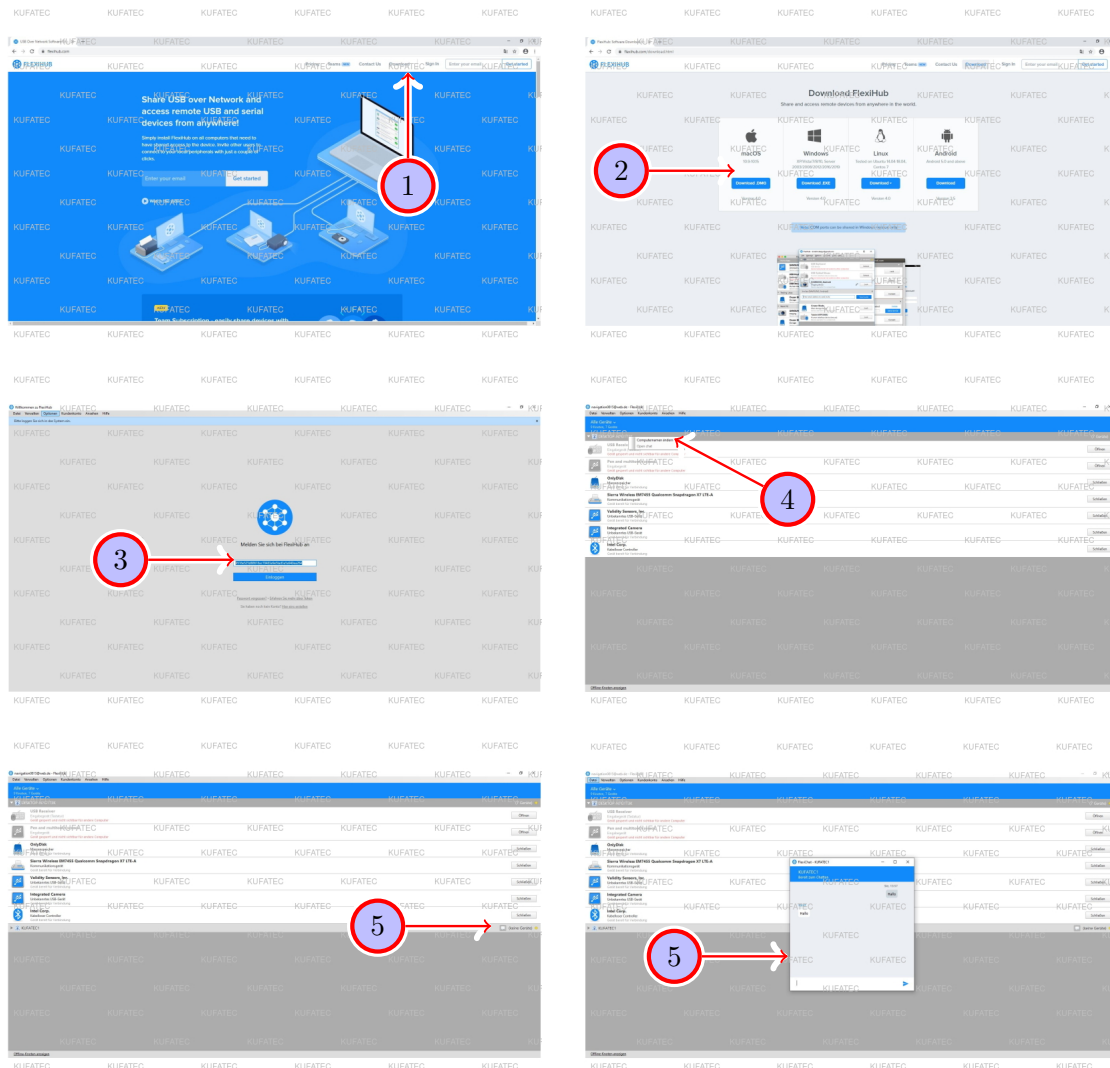


Figure 4: Usage FlexiHub (PC)

Table 4: Instructions to connect via FlexiHub (PC)

No.	Work step	Note
1	You need the free program <b>FlexiHub</b> . It can be downloaded from <a href="https://www.flexihub.com/de/download.html">https://www.flexihub.com/de/download.html</a> .	
2	Select the suitable version for your operation system in the download area. Download the suitable version and install the program on your PC.	
3	After the installation the program has to be started. After the program is started, you have to login.	
	The login is executed via a so called <b>token</b> . It is created by <b>KUFATEC</b> and is send to you via email. Therefor check your email inbox.	
4	After the login the computer name has to be changed. Execute a right click on the marked grey bar, then go to change computer name.	
!!	<b>Insert the vehicle identification number as the new computer name for the vehicle.</b>	
5	Open the marked chat window. Pay attention to possible instructions of the KUFATEC employee.	

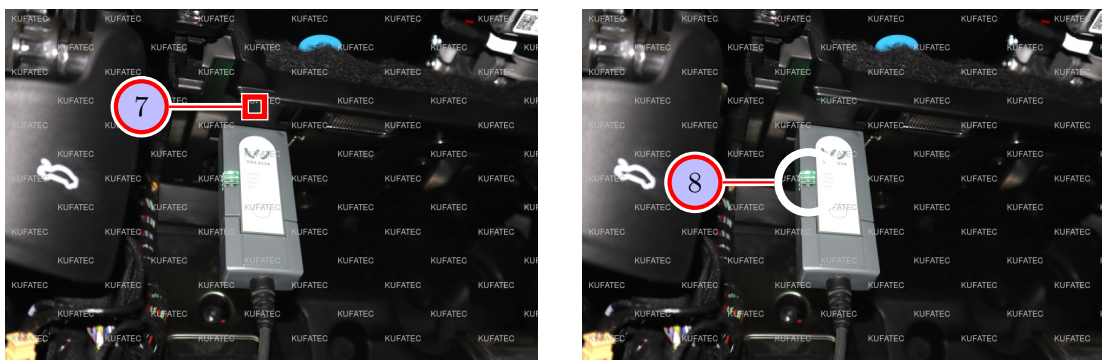


Figure 5: Usage FlexiHub (PC)

Table 5: Instructions to connect via FlexiHub (PC)

No.	Work step	Note
6	Make sure that the diagnosis dongle is connected with the diagnosis interface of the vehicle. Open the hood of the vehicle. Turn on the ignition of the vehicle. Connect the vehicle to a suitable vehicle battery charger.	
!!	<b>Important note: The used dongle must not be locked. If it is locked/password secured, the admin has to remove it before.</b>	
7	Connect the diagnosis dongle to the pc and the vehicle. It is connected to the PC via USB cable.	
!!	<b>Note: No other devices must be connected to the laptop and no other programs must be opened. Especially make sure that ODIS is closed completely and is definitely not opened.</b>	
8	Make sure that after connecting the vehicle with the PC all LEDs of the dongle work/blink as intended.	
9	Now the commissioning can be done by our employee. <b>Please make sure that you are available by phone the whole time, so you can react to possible questions/instructions of our employee.</b>	

## List of Figures

1	Preparatory works FlexiHub session . . . . .	4
2	How remove the component protection . . . . .	5
3	How read out the VCRN number . . . . .	6
4	Usage FlexiHub (PC) . . . . .	8
5	Usage FlexiHub (PC) . . . . .	9

## List of Tables

1	Preparatory works FlexiHub session . . . . .	4
2	How remove the component protection . . . . .	5
3	How read out the VCRN number . . . . .	6
4	Instructions to connect via FlexiHub (PC) . . . . .	8
5	Instructions to connect via FlexiHub (PC) . . . . .	9